



## Commercial Powder

Metal Group – TIN  
Catalogue No. – SST-S6001



### Description:

A pure tin powder especially created for the cold spray process. Surface hardness is typically **HB: 14 – 15** and the adhesion on Copper is **3500 psi bonding strength**. Used primarily for corrosion protection and for creating electrically conductive elements.

### Specifications:

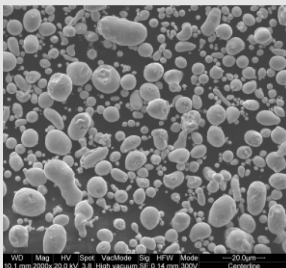
#### Material Properties

Composition:	Sn 99.7% min.
Particle Size:	-45 to +5 µm
Morphology	Spherical Shape

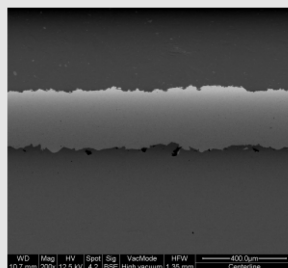
#### Typical Coating Properties

Bond Strength:	> 3500 psi (on Cu)
Deposition Efficiency:	Up to 18%
Hardness (Brinell):	14 – 15
Porosity (vol / vol):	< 0.5%

#### Typical Micrograph



S6001 Powder



S6001 Coating on Copper

#### Recommended Spray Parameters

*(When utilizing CenterLine Cold Spray equipment. Recommendations may not apply when making use of non-CenterLine equipment)*

Temperature:	175 – 225°C
Pressure:	85 – 120 psi
Standoff Distance:	10 – 25 mm
Gas:	Compressed air or nitrogen
Feed Rate (gram/min.):	13 – 15
Gun Traverse Speed:	40 mm/s for a 8 – 9 mil coating per pass
Surface Preparation:	SST-G0002 commercial blast
Spray Nozzle:	UltiFlow™

#### Ordering

Catalogue Number:	SST-S6001
Standard Packaging:	400 ml or 1 gallon sized container
Selling Unit:	Pound

To discuss your Cold Spray Application(s) or for more information about powders and blends, please contact your CenterLine SST representative or visit our website at [www.supersonicspray.com](http://www.supersonicspray.com).